



AUSCARE
Training Organisation
RTO 52578 | CRICOS 04055H



2025 International Student Prospectus

CONTENTS

Welcome Message.....	1	Unique Student Identifier (USI).....	5
Reasons to study at Auscare.....	2	Courses.....	6
About the College.....	3	Health Services.....	7
Campus Location.....	3	Community Services.....	10
Campus Facilities.....	4	Leadership & Management.....	14
Student Support.....	4	Important Information.....	18
Orientation.....	5	How to Apply.....	19

Welcome Message

Welcome to Auscare Training Organisation, where your future begins. We provide exceptional education and professional training to help you achieve your career goals.

Our Offerings

- Practical Skills & Industry Knowledge: Courses in healthcare, community services, leadership, and management.
- Expert Trainers: Passionate educators dedicated to your success.
- Modern Facilities: State-of-the-art learning environments.

Our Commitment

- Student Success: Personalised support to match your aspirations and learning styles.
- Quality Education: Nationally recognised programs with hands-on experiences.

Inclusive Community: We embrace diversity, creating a vibrant, multicultural learning environment. Whether you're a school leaver or a professional seeking to upskill, Auscare is here to support you. Explore our prospectus and discover the educational pathways awaiting you.

Welcome to Auscare, where education meets excellence.

Reasons to study at Auscare

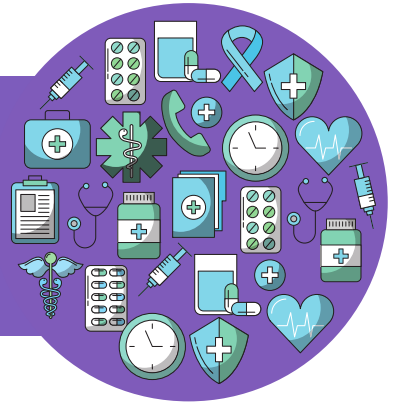


Commitment to Quality Education

At Auscare, quality education takes center stage. The institution prides itself on maintaining the highest standards of teaching and learning. With a dedicated faculty comprising industry experts and experienced educators, you can expect a comprehensive learning experience that is relevant, practical, and up to date.

Industry-Relevant Courses

Auscare understands the importance of aligning education with industry demands. Course offerings span various sectors, including healthcare, aged care, disability support, community services, and more.



Multicultural Environment

Studying at Auscare means immersing yourself in a multicultural environment. The institution attracts students from diverse backgrounds, fostering a rich tapestry of cultures, ideas, and perspectives. Engaging with fellow students from around the world not only enhances your global awareness but also enriches your personal growth.

Placement Opportunities

One of the hallmarks of Auscare is its strong network of industry partnerships. These connections translate into invaluable placement opportunities for students. By gaining real-world experience in reputable organisations, you can bridge the gap between theory and practice, setting yourself apart in the job market.



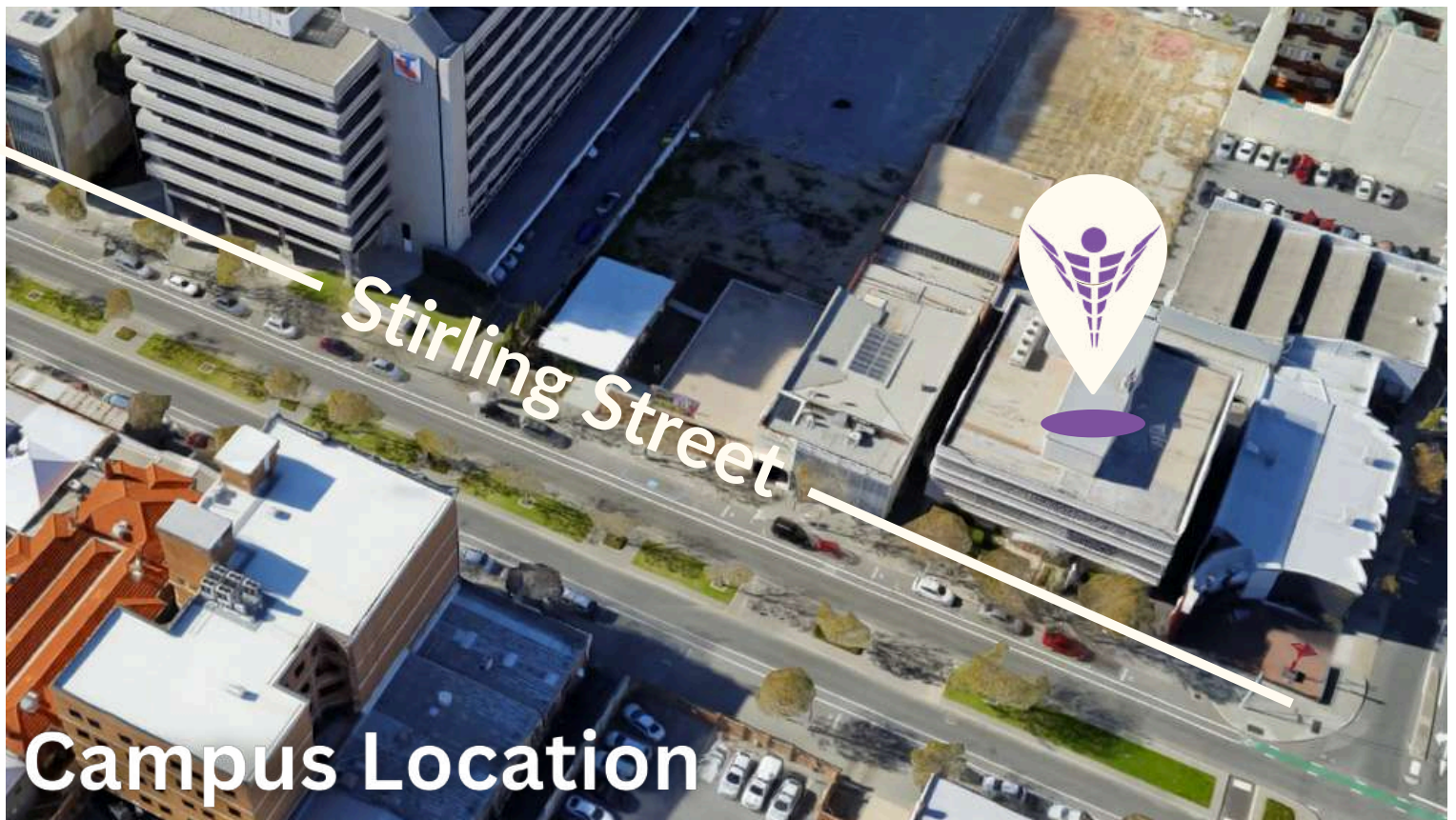
Convenient Learning Options

Recognising the diverse needs of students, Auscare offers convenient learning options. All of our courses have been designed with your convenience in mind. We offer weekday, evening and weekend classes for our various courses.

About Auscare Training Organisation



Auscare Training Organisation stands out for its practical training and hands-on experience, allowing students to apply theoretical knowledge in real-world settings. As part of the esteemed Auscare Group, they benefit from a rich heritage of expertise and commitment to exceptional healthcare services. With a stellar reputation, comprehensive curriculum, and a focus on excellence, Auscare Training Organisation empowers compassionate healthcare professionals through transformative education.



Nestled in the heart of Perth, Auscare Training Organisation at 60-62 Stirling Street, Perth WA 6000 offers students an ideal location to pursue their healthcare education. Perth, the capital of Western Australia, provides a vibrant urban center with cultural, recreational, and career prospects.

With excellent connectivity and accessibility, Auscare Training on Stirling Street is conveniently located near public transportation. The surrounding area offers a lively atmosphere, with cafes, restaurants, and recreational facilities within walking distance for students to relax and enjoy.



Campus Facilities

State-of-the-art campus facilities designed to inspire learning and quality education.

- Dynamic learning environment catering to the diverse needs of students
- Vibrant atmosphere promoting creativity and innovation
- Well-equipped simulation rooms for hands-on training
- Tailored facilities for authentic industry experiences
- Strategic location with easy access to nearby amenities, public transportation, and industry partnerships
- Opportunities for real-world experiences and connections with professionals
- Exceptional campus facilities for a stimulating environment

Student Support

- Services to assist you in adjusting to study and life in Australia
- Resources and facilities at Auscare
- Satisfactory course progress requirements
- Complaints and Appeals process at Auscare





Orientation

Comprehensive orientation process for all new students with a host of relevant information relating to your learning journey.

- Warm welcome and introduction to the Auscare community
- Familiarisation with campus, facilities, and support services
- Guidance on academic policies, resources, and key contacts
- Opportunities to connect with fellow students and form lasting friendships
- Interactive sessions and ice-breaker activities fostering camaraderie
- Support from experienced staff for course selection and academic planning
- Introduction to extracurricular activities, clubs, and events
- Opportunities to pursue passions and engage in a vibrant community
- Commitment to student success and empowerment
- Seamless transition for thriving academically, personally, and professionally.

Unique Student Identifier (USI)

If you're planning on enrolling in one of our courses, you'll need a Unique Student Identifier (USI) in order to receive your qualification or statement of achievement. There are a few exceptions to this requirement, so be sure to check if you're eligible for an exemption. Don't have a USI yet? No problem!

You can easily get one at <https://www.usi.gov.au/students/get-a-usi>

Courses

Auscare Training Organisation is a distinguished institution dedicated to providing exceptional healthcare, community service and leadership and management education and training. Auscare Training Organisation offers the following courses:



Health Services

HLT33015 Certificate III in Health Services Assistance (Acute Care) (CRICOS:115227C)

HLT37215 Certificate III in Pathology Collection (CRICOS:116182C)



Community Services

CHC33021 Certificate III in Individual Support (Ageing & Disability) (CRICOS: 112706A)

CHC52021 Diploma of Community Services (CRICOS: 112707M)

CHC62015 Advanced Diploma of Community Sector Management (CRICOS: 112345K)



Leadership & Management

BSB50420 Diploma of Leadership and Management (CRICOS: 112344M)

BSB60420 Advanced Diploma of Leadership and Management (CRICOS: 112347H)

BSB80120 Graduate Diploma of Management (Learning) (CRICOS: 112346J)



**HEALTH
SERVICES**



HLT33115

Certificate III in Health Services Assistance (CRICOS: 115227C)

HLT33115 Certificate III in Health Services Assistance focuses on equipping learners with the knowledge and skills needed to assist health professionals in acute healthcare settings through theoretical and practical training.



Course Fees

Tuition Fee: **AUD 6500**

Resource Fee: **AUD 500**

Enrolment Fee: **AUD 250**

Duration

35 Weeks including 80 hours of work-based training + self-study component.

20 scheduled face-to-face contact hours each week to meet student visa requirements.

Academic level:

Completion of Australian Year 10 or other equivalent Australian qualification/s for entry to a Certificate III level

English proficiency:

- Evidence of an IELTS test score of 6.0 or equivalent.
- Complete the LLN assessment.
- Moderate level of computer literacy.

Minimum Age:

18 years of age and above.



Scan the QR code for more information on the course.



HLT37215

Certificate III in Pathology Collection
(CRICOS: 116182C)

The HLT37215 Certificate III in Pathology Collection trains individuals to become phlebotomists, collecting blood and specimens. It provides knowledge and practical skills for working in health settings, offering transferable skills for future health-related studies.



Course Fees

Tuition Fee: **AUD 6000**

Resource Fee: **AUD 500**

Enrolment Fee: **AUD 250**

Duration

30 Weeks including 35 hours of work-based training
+ self-study component.

20 scheduled face-to-face contact hours each week to
meet student visa requirements.

Academic level:

Completion of Australian Year 10 or other equivalent Australian qualification/s for entry to a Certificate III level

English proficiency:

- Evidence of an IELTS test score of 6.0 or equivalent.
- Complete the LLN assessment.
- Moderate level of computer literacy.

Minimum Age:

18 years of age and above.



Scan the QR
code for more
information on
the course.



COMMUNITY SERVICES COURSES





CHC33021

Certificate III in Individual Support
(Ageing & Disability) CRICOS 112706A

This qualification prepares individuals for roles in community, home, or residential care settings. They offer person-centered support, follow legislation and standards, and need 120 hours of practical experience for completion. No licensing is required.



Course Fees

Tuition Fee: **AUD 5000**

Resource Fee: **AUD 500**

Enrolment Fee: **AUD 250**

Duration

31 Weeks including 120 hours of work-based training
+ self-study component.

20 scheduled face-to-face contact hours each week to
meet student visa requirements.

Academic level:

Completion of Australian Year 10 or other equivalent Australian qualification/s

English proficiency:

- Evidence of an IELTS test score of 6.0 or equivalent.
- Complete the LLN assessment.
- Moderate level of computer literacy.

Minimum Age:

18 years of age and above.



Scan the QR
code for more
information on
the course.



CHC52021

Diploma of Community Services
(CRICOS: 112707M)

Community service workers provide person-centered services, manage cases, and coordinate programs independently, impacting individuals, groups, and communities. Practical experience of 200 hours is required without needing licensing.



Course Fees

Tuition Fee: **AUD 15500**

Resource Fee: **AUD 700**

Enrolment Fee: **AUD 250**

Duration

80 Weeks including 200 hours of work-based training
+ self-study component.

20 scheduled face-to-face contact hours each week to
meet student visa requirements.

Academic level:

Completion of Australian Year 12 or other equivalent Australian qualification/s

English proficiency:

- Evidence of an IELTS test score of 6.0 or equivalent.
- Complete the LLN assessment.
- Moderate level of computer literacy.

Minimum Age:

18 years of age and above.



Scan the QR
code for more
information on
the course.



CHC62015

Advanced Diploma of Community Sector Management (CRICOS: 112345K)

This qualification targets middle managers or managers in the community sector overseeing service delivery, personnel, risk management, and continuous improvement in programs, projects, or community-based organisations.



Course Fees

Tuition Fee: **AUD 7000**

Resource Fee: **AUD 500**

Enrolment Fee: **AUD 250**

Duration

52 Weeks including 12 weeks break
+ self-study component.

20 scheduled face-to-face contact hours each week to meet student visa requirements.

Academic level:

Completion of Australian Year 12 or other equivalent Australian qualification/s

English proficiency:

- Evidence of an IELTS test score of 6.0 or equivalent.
- Complete the LLN assessment.
- Moderate level of computer literacy.

Minimum Age:

18 years of age and above.



Scan the QR
code for more
information on
the course.



LEADERSHIP & MANAGEMENT



BSB50420

Diploma of Leadership and Management
(CRICOS: 112344M)

Skilled leaders and managers excel in communication, problem-solving, critical thinking, planning, organizing, implementing tasks, and monitoring team objectives in diverse environments.



Course Fees

Tuition Fee: **AUD 9500**

Resource Fee: **AUD 500**

Enrolment Fee: **AUD 250**

Duration

52 Weeks including 12 weeks break
+ self-study component.

20 scheduled face-to-face contact hours each week to meet student visa requirements.

Academic level:

Completion of Australian Year 12 or other equivalent Australian qualification/s for entry to a diploma level

English proficiency:

- Evidence of an IELTS test score of 6.0 or equivalent.
- Complete the LLN assessment.
- Moderate level of computer literacy.

Minimum Age:

18 years of age and above.



Scan the QR
code for more
information on
the course.



BSB60420

Advanced Diploma of Leadership and Management (CRICOS: 112347H)

Individuals with leadership and management expertise are accountable for personal and team outcomes, showcasing initiative, judgment, cognitive skills, and effective communication for information processing and synthesis.



Course Fees

Tuition Fee: **AUD 9000**

Resource Fee: **AUD 500**

Enrolment Fee: **AUD 250**

Duration

52 Weeks including 12 weeks break
+ self-study component.

20 scheduled face-to-face contact hours each week to meet student visa requirements.

Academic level:

Completion of Australian Diploma or other equivalent Australian qualification/s for entry to a diploma level

English proficiency:

- Evidence of an IELTS test score of 6.0 or equivalent.
- Complete the LLN assessment.
- Moderate level of computer literacy.

Minimum Age:

18 years of age and above.



Scan the QR code for more information on the course.



BSB80120

Graduate Diploma of Management
(Learning) (CRICOS: 112346J)

This qualification emphasises the leadership of individuals with specialised knowledge in organisational learning and capability development, relevant for leaders and managers in learning-focused organisations.



Course Fees

Tuition Fee: **AUD 21000**

Resource Fee: **AUD 900**

Enrolment Fee: **AUD 250**

Duration

104 Weeks including 24 weeks break
+ self-study component.

20 scheduled face-to-face contact hours each week to
meet student visa requirements.

Academic level:

Completion of Australian Advanced Diploma or other equivalent Australian qualification/s for entry to a diploma level.

English proficiency:

- Evidence of an IELTS test score of 6.0 or equivalent.
- Complete the LLN assessment.
- Moderate level of computer literacy.

Minimum Age:

18 years of age and above.



Scan the QR
code for more
information on
the course.

Important information



Overseas Student Health Cover (OSHC)

What is OSHC?

OSHC is a health insurance policy specifically designed for international students in Australia. It provides cover for medical and hospital expenses, including emergency treatment and ambulance services. OSHC also covers prescription medication, and in some cases, dental treatment. It is important to note that OSHC does not cover pre-existing medical conditions, so if you have any pre-existing conditions, you should consider purchasing additional coverage.

Why do you need OSHC?

As an international student, you are required to have OSHC as a condition of your student visa. Additionally, OSHC can provide you with peace of mind knowing that you have access to quality medical care in case of an emergency. It can also save you a significant amount of money, as medical costs in Australia can be expensive without insurance.

How to obtain OSHC?

OSHC can be purchased through a number of providers, including Medibank, Allianz Global Assistance and NIB. You can purchase OSHC through the provider of your choice, or through your education provider. You can find more information and purchase OSHC from:

1. Medibank
2. Allianz Global Assistance
3. NIB



How to apply

Follow these easy steps in order to enrol.



Decide on the course you would like to undergo
Browse our website for the course that you are interested to attend.

Get in touch with us

Write us an email on enrolment@auscaretraining.edu.au with information on the courses you would like to undergo.



Receive Guidance from our enrolment team

Our enrolment team will guide you on the way forward so that you can begin your international student journey at Auscare Training Organisation.



Begin attending classes at Auscare Training

Once you have completed the enrolment process and received your visa, your journey at Auscare Training Organisation begins.





Auscare's first batch of international and government funded students.



Students after their work placement assessment visits have been conducted.



During one of the manual handling practical sessions.



A light moment between students and their trainer Kinley.



AUSCARE
Training Organisation
RTO 52578 | CRICOS 04055H



60-62 Stirling Street Perth WA 6000



+61 (8) 6323 2023



enrolment@auscaretraining.edu.au



www.auscaretraining.edu.au